

Bike West Liberty

Biking stations and clubs

West Liberty University



Main Goal

Create a bike friendly and accessible campus

Research Findings



200

college students and staff reached



2300

Number of students at West Liberty University



13%

Of students bike to campus in the United States

The campus and town of West Liberty University is a geographically isolated place. Access to transportation can be limited, so creating another safe and active form of transportation was necessary.

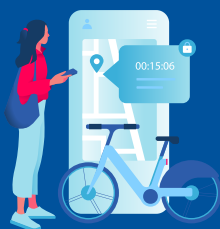


Environmental Changes

Created physical and observable change with bike stations and racks all around West Liberty University campus.



ActiveWV 2030 Physical Activity Plan Sector:



Transportation, Land Use, Community Design

Building Capacity

Stronger Communities

People who are geographically isolated can now bike to and on campus, mini fix-it bags are also available for students and staff.

Bike club on campus was created to learn more about biking and an app was created to share routes.



The Bottom Line

The project has been a big success so far, with adding repair stations, a "Bike West Lib" app, and portable mini fix-it bags. They have done a lot to bring positive change to campus and plan on continuing to. They have some long term plans already in place. Learn more at westliberty.edu/news/news/bikewestlib-initiative-brings-bike-racks-to-campus/

