

# New Wellness Equipment Glenwood School



## Success Story

Acquired 2 new massage chairs for the staff lounge, a new ping pong table for students and staff, installed a new water station, and added mulch to the playground



**586**

Students Impacted



**85**

Faculty/Staff Members  
Impacted



**1**

Teachers/Staff lounge  
upgraded

## Building Capacity

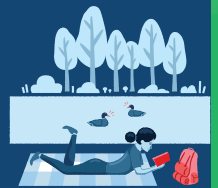
Stronger Communities



The massage chairs have provided teachers with a way to quite literally take a load off their feet during lunch. The water station has also made accessing water easier for the top half of the building.

## Environmental Changes

Has created physical and observable change by adding new chairs, a new ping pong table, a water station, and new mulch to the school environment.



## Impacts of New Equipment

In the previous year, Glenwood's lowest scoring area in the SHI was employee wellness and health promotion. They were able to improve upon this by adding two massage chairs as well as a water station so teachers don't need to go downstairs to get water. Another low area was the physical education and physical activity section. They purchased a ping pong table that both faculty and students are able to use. This allows students the opportunity to play a game they might not have previously as well as allowing staff a chance to interact with students outside the classroom. Being able to interact with students outside the rigor of the classroom has helped teachers remember why they chose teaching as a profession. To ensure a safer outside play area, mulch was also added to the playground.

